

Fabric Collection

VARIER FURNITURE

VARIER COLLECTION



We believe that great design can be passed on from generation to generation as heirlooms. That's why we only work with materials and manufacturing techniques that can stand the test of time. Because long-living products benefits both people and planet.

Included in this overview is the entire Varier textile and leather collection in our most popular colors. The variations shown here are on stock and we can assure our partners the shortest possible delivery time. To explore further color variations, please visit our suppliers websites.

If you are considering a custom fabric that is not represented in the Varier collection, please ensure the upholstery has adequate elasticity and durability needed to delicately hug the characteristic organic shapes of Varier chairs. For more information on bespoke solutions, please contact our customer service team.

REVIVE BY KVADRAT



REV194



REV774



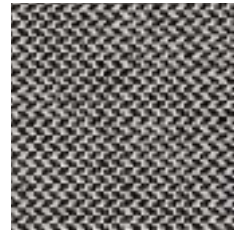
REV634



REV424



REV414



REV164



REV834



REV144

Revive is a vibrant upholstery textile designed by Georgina Wright. Made from post-consumer recycled polyester (PET) it is created with a focus to reduce the environmental impact both in production and on natural resources. The design is inspired by the textures, colors and materials of harbors and fishing boats. Revive is comprised by two unicolors, one in the warp and one in the weft, either tone-in-tone or slightly contrasting.

Type
Upholstery

Composition
100% Recycled polyester

Pattern
Solid

Sustainability
Recycled content

Lightfastness
5

Durability
60.000 Martindale

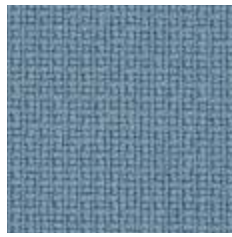
Pilling
4-5

Design
Georgina Wright

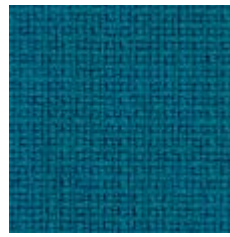
FAME BY GABRIEL



FA0005



FA6130



FA7004



FA8143



FA2067



FA4089



FA4058



FA0999

Fame is a unique woolen upholstery fabric which is exceptionally durable, but nevertheless extra soft and stretchable. The fabric is silky smooth thanks to its exclusive fine woolen worsted, with outstanding durability assured through the use of new yarn structures and spinning methods. The fabric stretches in both directions, making Fame especially suitable for furniture with round and organic shapes.

Type

Upholstery

Lightfastness

5-7

Composition

95% New Zealand wool, 5% Polyamide

Durability

200.000 Martindale

Pattern

Solid

Pilling

4

Sustainability

Standard 100 by OEKO-TEX®
EU Ecolabel

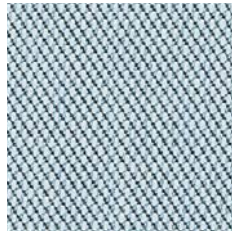
Design

Inger Mosholt Nielsen

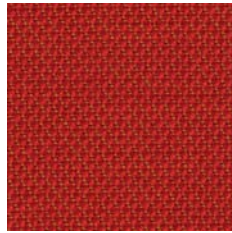
STEELCUT TRIO 3 BY KVADRAT



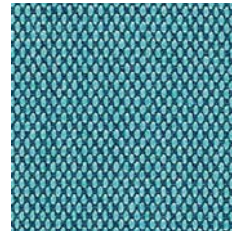
STT195



STT713



STT553



STT983

Steelcut Trio is a hardwearing woolen upholstery textile. The three-dimensional surface of Steelcut Trio resembles small pyramids or steel points. Despite the complexity of the textile's innovative weave, it has a simple, precise expression. Steelcut Trio is yarn-dyed and made from 3 differently colored yarns.

Type
Upholstery

Composition
90% New wool (worsted), 10% Nylon

Pattern
Solid

Sustainability
Complies with EU ecolabel "The Flower"

Lightfastness
5

Durability
100.000 Martindale

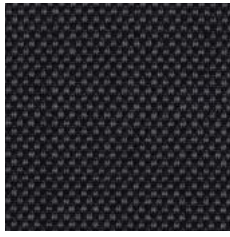
Pilling
4

Design
Dijkmeijer & Ridolfo

BREEZE FUSION BY GABRIEL



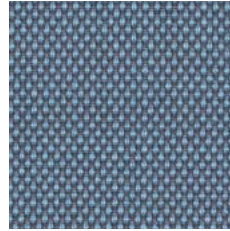
BF4003



BF4004



BF4103



BF4602

Breeze Fusion is a richly textured, woolen upholstery textile brought to life by intriguing color blends. Explore infinite shades and nuances on a surface in constant change, depending on light and perspective. Breeze Fusion offers all the strong properties of wool including superior durability, inherent fire resistance and a strong environmental profile, carrying the EU Ecolabel and STANDARD 100 by OEKO-TEX®.

Type

Upholstery

Lightfastness

5-7

Composition

88% New Zealand wool, 12% Polyamide

Durability

100.000 Martindale

Pattern

Solid

Pilling

4-5

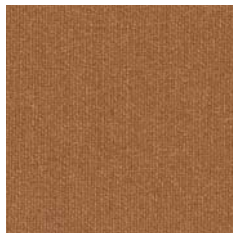
Sustainability

Standard 100 by OEKO-TEX®
EU Ecolabel

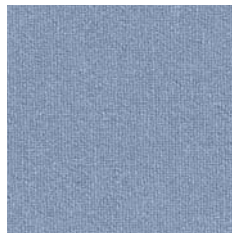
Design

Cenk Kivrikoglu

FOREST NAP BY KVADRAT



FN252



FN752



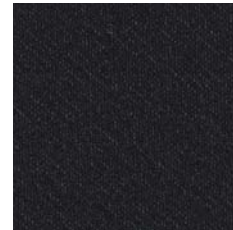
FN452



FN912



FN952



FN192

Woolen Forest Nap is a simple upholstery textile, constructed with a plain weave. Forest Nap comes in an array of colors, ranging from understated natural hues to bolder notes, all inspired by colors found in nature.

Type
Upholstery

Composition
95% New wool (worsted), 5% Nylon

Pattern
Solid

Sustainability
Complies with EU ecolabel "The Flower"

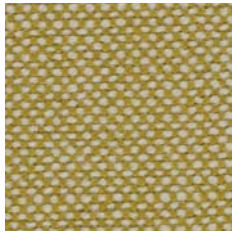
Lightfastness
5-6

Durability
50.000 Martindale

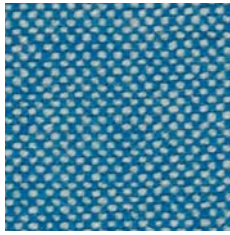
Pilling
4

Design
Akira Minagawa

HALLINGDAL 65 BY KVADRAT



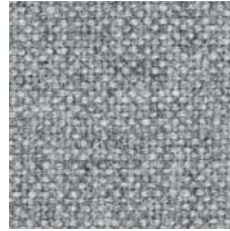
HAL407



HAL840



HAL190



HAL130

Kvadrat's first textile 'Hallingdal' has become the archetype of woolen textiles. The very durable upholstery fabric was originally designed in 1965 by Nanna Ditzel, and is now available in a version with an updated color scale. Hallingdal 65 is made of wool and viscose, which complement each other well: the wool provides excellent durability and flexibility, whilst the viscose adds brilliance and depth to the color. Both materials are dyed before they are spun, which highlights the rich texture of the fabric.

Type

Upholstery

Lightfastness

7

Composition

70% New wool, 30% Viscose

Durability

100.000 Martindale

Pattern

Solid

Pilling

3-4

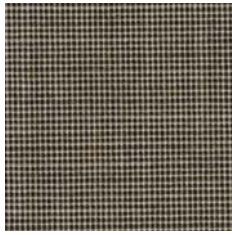
Sustainability

Complies with EU ecolabel "The Flower"

Design

Nanna Ditzel

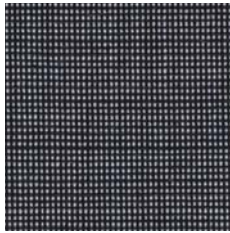
UMAMI BY KVADRAT



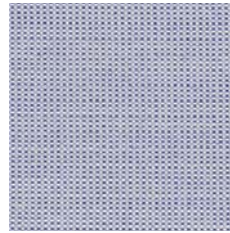
UMA251



UMA181



UMA191



UMA711

Umami is a durable woolen upholstery fabric designed by Louise Sigvardt. The surface features a geometric design in a subdued color palette.

Type

Upholstery

Lightfastness

6-7

Composition

70% New wool, 30% Viscose

Durability

80.000 Martindale

Pattern

Geometric

Pilling

4

Sustainability

Complies with EU ecolabel "The Flower"

Design

Louise Sigvardt

DYNAMICA BY VYVA FABRICS



DIN9186



DIN9154



DIN9059



DIN9062

Dinamica Classica is an exclusive and timeless micro-fiber fabric. The fabric is ecologically developed according to a new and revolutionary technique and has all the advantages of modern technology. Dinamica breaths, does not wrinkle and can be washed at 60 degrees. Dinamica consists of recycled polyester and polyurethane fibres. The production process itself is completed without the use of harmful chemical solvents.

Type

Upholstery

Lightfastness

5

Composition

88% Recycled polyester, 12% Polyurethane

Durability

50.000 Martindale

Pattern

Geometric

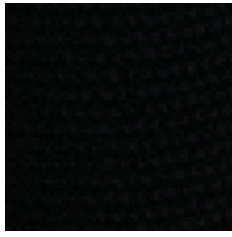
Pilling

5

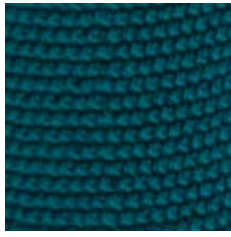
Sustainability

Recycled content

KNIT BY DEVOLD



KNIT 009



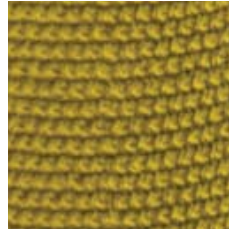
KNIT 083



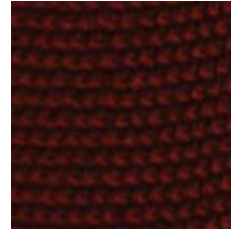
KNIT 081



KNIT 252



KNIT 088



KNIT 084

Knit is an excellent furniture fabric with its durable and natural resilient properties. The woolen upholstery textile is custommade specifically for Ekstrem by Norwegian Devold. Knitted from one continuous thread, it provides an elasticity which is essential when fitted to the chair's organic shape. The knitted fabric provides a soft and breathable surface and features a classic quadratic pattern.

Type

Upholstery

Composition

90% Wool, 10% Polyester

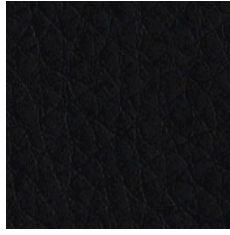
Pattern

Geometric

Sustainability

OEKO-TEX® certified

DOLCE BY SPRADLING



DOL728

Dolce is a high-end faux leather upholstery, free from heavy metals and formaldehyde. Dolce is made from polycarbonate resin system, which provide an incredibly strong and durable product.

Type

Upholstery

Durability

100.000 Martindale

Composition

100% Polyurethane

Pattern

Geometric

Sustainability

Recycled content

DUNES BY SØRENSEN LEATHER



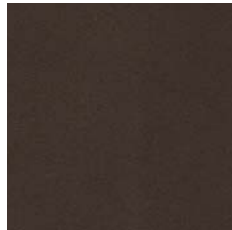
Anthrazite 21003



Grey 21007



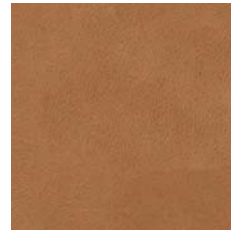
Racing Green 21005



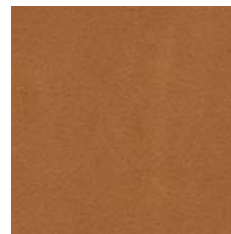
Dark Brown 21001



Rust 21002



Camel 21004



Cognac 21000

The DUNES® collection has received the Nordic Swan Ecolabel. A highly respected certification verifying that it meets a rigorous set of requirements in regards to environment, use of energy and resources. Run your fingers along the surface of DUNES® and it feels as smooth as butter. The treatment process involving sanding, buffing and application of a custom oil to the surface gives it a velvety touch with a sublime tactile feel. DUNES® boasts a matt and raw look featuring subtle, natural markings which makes each hide unique. The colors will vary from hide to hide. As a result of the leather's exposure to daylight, interior lighting and usage, a patina will develop, and the surface will become smoother and shinier over time.

Type

Aniline leather

Thickness

1.1 - 1.3 mm

Size

4.5 - 5.5 m²

Origin

European rawhide, from Italy, Germany, Austria, Switzerland and Scandinavia

Finish

Leather oil to enhance the body

Tannage

Chrome-free

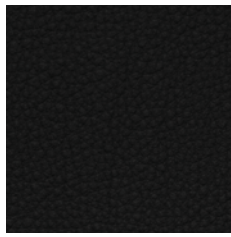
Dye

Water-based aniline dye

Surface

An elegant, matt surface with a velvety look and feel

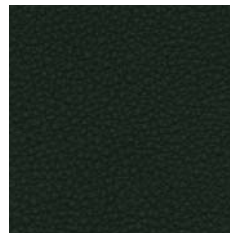
NOIR BY SØRENSEN LEATHER



Black 31320



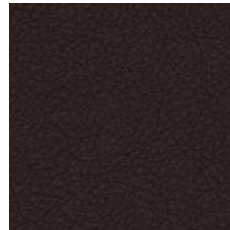
Royal 31326



Green 31327



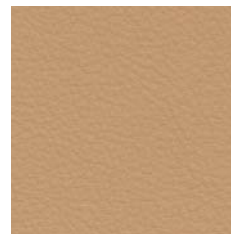
Red 31324



Tobacco 31328



Cognac 31322



Nature 31323

NOIR is one of those leathers that stirs the emotions even before you touch it. Come closer and you can see the lovely, natural irregular marking from the rawhide. Run your fingers across the surface and feel the smooth texture of the natural grain. As a Semi-Aniline leather, NOIR has a special light finish that protects it from dirt, the effects of light and the harmful rays of the sun. The surface has a slightly more uniform look than Aniline leather, but the natural grain is still visible, adding to its authenticity and originality. NOIR is soft, flexible and comfortable, making it an exceptional choice for furniture.

Type

Semi-Aniline leather

Thickness

1.0 – 1.2 mm

Size

5.0 – 6.0 m²

Origin

European rawhide, from Italy, Germany, Austria, Switzerland and Scandinavia

Finish

Light surface protection

Tannage

Chrome

Dye

Water-based aniline dye

Surface

Matt, soft with slight texture

REFERENCES



info@berrevoets-zitoplossingen.nl

kvadrat.dk

gabriel.dk

vyvafabrics.com

spradlingvinyl.com

sorensenleather.com

[varier®](http://varier.com)